

UNION SWITCH & SIGNAL COMPANY

Zachary C. Gillihan 2008

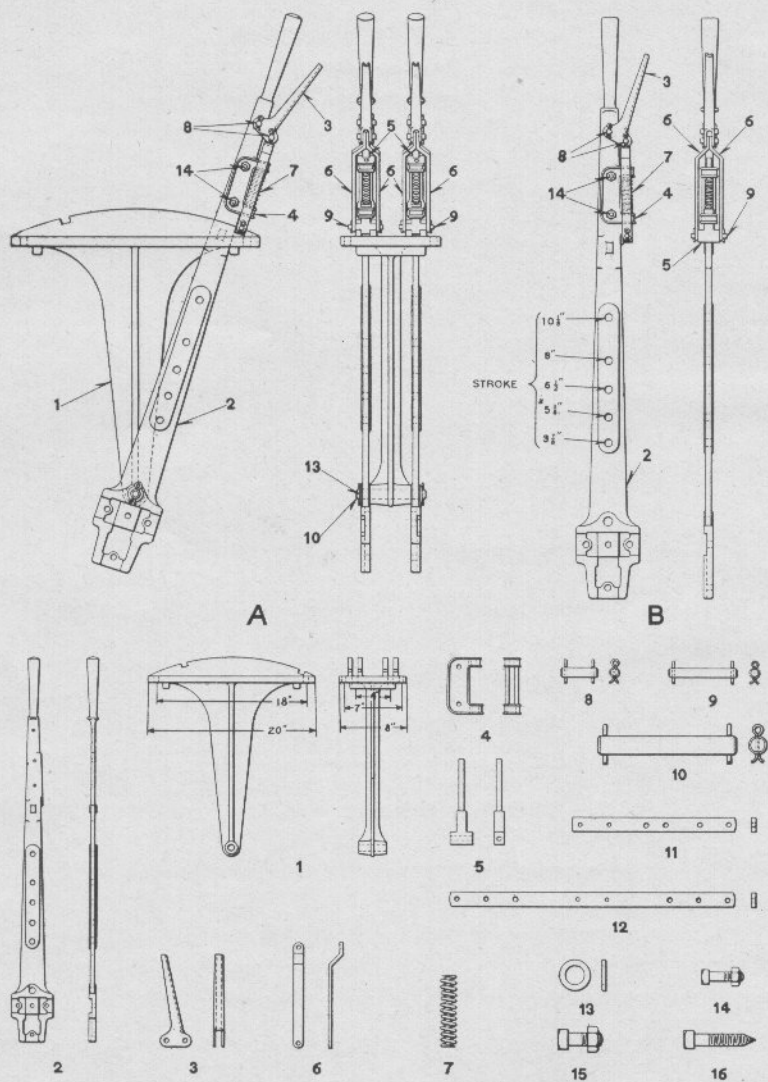


TABLE LEVER MACHINE, TWO LEVER, TWO AND THREE POSITIONS  
ARRANGED FOR HORIZONTAL AND VERTICAL PIPE  
AND WIRE CONNECTIONS

## UNION SWITCH &amp; SIGNAL COMPANY

**TABLE LEVER MACHINE**  
**TWO LEVER, TWO AND THREE POSITIONS**  
**ARRANGED FOR HORIZONTAL AND VERTICAL PIPE**  
**AND WIRE CONNECTIONS**

Order by Plate, Piece, Reference and Abbreviated Description Given in  
Heavy Face Type Only.

Drawing references are shown for convenience in checking material with  
shipping lists and invoices.

Piece	Ref.	Description	Drawing Reference
76446	A	2-Lever, 2-Position Table Machine, arranged for horizontal pipe connections, as shown strokes $6\frac{1}{2}$ " , 8" and $10\frac{1}{8}$ " .....	C-4062-4
76449	Aa	2-Lever, 2-Position Table Machine, for horizontal wire connections, with tail lever, Ref. 11b, strokes 8" and $10\frac{1}{8}$ " .....	C-4062-4
72350	Ab	2-Lever, 2-Position Table Machine, for vertical pipe connections, with tail lever, Ref. 11, strokes 8" and $10\frac{1}{8}$ " .....	C-4062-4
76447	Ac	2-Lever, 2-Position Table Machine, for vertical wire connections, with tail lever, Ref. 12, strokes 8" and $10\frac{1}{8}$ " .....	C-4062-4
76461	Ad	2-Lever, 3-Position Table Machine, arranged for horizontal pipe connections, strokes $6\frac{1}{2}$ " , 8 and $10\frac{1}{8}$ " .....	C-4062-4
76451	Ae	2-Lever, 3-Position Table Machine, for horizontal wire connections, with tail lever, Ref. 11b, strokes 8" and $10\frac{1}{8}$ " .....	C-4062-4
76456	Af	2-Lever, 3-Position Table Machine, for vertical pipe connections, with tail lever, Ref. 11, strokes 8" and $10\frac{1}{8}$ " .....	C-4062-4
76450	Ag	2-Lever, 3-Position Table Machine, for vertical wire connections, with tail lever, Ref. 12, strokes 8" and $10\frac{1}{8}$ " .....	C-4062-4
76509	B	Lever, for horizontal pipe connections, as shown, strokes $6\frac{1}{2}$ " , 8" and $10\frac{1}{8}$ " .....	B-9671-3
	Ba	Lever, for horizontal wire connections, (Inc. 1-B, 1-11b and 2-15), strokes 8" and $10\frac{1}{8}$ " .....	B-9671-3

## UNION SWITCH & SIGNAL COMPANY

### TABLE LEVER MACHINE TWO LEVER, TWO AND THREE POSITIONS ARRANGED FOR HORIZONTAL AND VERTICAL PIPE AND WIRE CONNECTIONS

(Continued)

Order by Plate, Piece, Reference and Abbreviated Description Given in  
Heavy Face Type Only.

Drawing references are shown for convenience in checking material with shipping lists and invoices.

Piece	Ref.	Description	Drawing Reference
	Bb	Lever, for vertical pipe connections, (Inc. 1-B, 1-11 and 2-15), strokes 8" and 10 $\frac{1}{8}$ ".....	B-9671-3
	Bc	Lever, for vertical wire connections (Inc. 1-B, 1-12 and 2-15), strokes 8" and 10 $\frac{1}{8}$ ".....	B-9671-3
1442	1	Stand, 2-lever, 2-position, as shown.....	C-1571-1
38935	1a	Stand, 2-lever, 3-position.....	C-1571-1
9751	2	Lever, M. I. Pat. 15036-A.....	B-8140-7
416	3	Latch Handle, M. I. Pat. 7450.....	B-8260-1
1316	4	Latch Shoe, M. I. Pat. T-7451-A.....	B-8264-1
3250	5	Latch Rod.....	8151-10
9094	6	Link.....	C-4224-1
29424	7	Coil Spring.....	7770-26
6533	8	Pin, $\frac{3}{8}$ "x1 $\frac{7}{16}$ ", with two $\frac{1}{8}$ "x $\frac{3}{4}$ " cotters, for fasten- ing latch handle to lever.....	B-10209-1
5530	9	Pin, $\frac{3}{8}$ "x2 $\frac{3}{4}$ ", with two $\frac{1}{8}$ "x $\frac{3}{4}$ " cotters, for fasten- ing link, Ref. 6, to latch rod.....	B-10209-1
2397	10	Lever Pin, $\frac{3}{4}$ "x5 $\frac{11}{16}$ ", with two $\frac{3}{16}$ "x1 $\frac{1}{8}$ " cotters, for Lever.....	B-10221-1
1457	11	Tail Lever, for vertical pipe connections.....	B-8142-2
	11a	Tail Lever, with Bolts (Inc. 1-11 and 2-15).....	B-8142-2
9754	11b	Tail Lever, for horizontal wire connections.....	B-8142-5
	11c	Tail Lever, with Bolts (Inc. 1-11b and 2-15).....	B-8142-5

## UNION SWITCH & SIGNAL COMPANY

### TABLE LEVER MACHINE TWO LEVER, TWO AND THREE POSITIONS ARRANGED FOR HORIZONTAL AND VERTICAL PIPE AND WIRE CONNECTIONS

(Continued)

Order by Plate, Piece, Reference and Abbreviated Description Given in  
Heavy Face Type Only.

Drawing references are shown for convenience in checking material with  
shipping lists and invoices.

Piece	Ref.	Description	Drawing Reference
1458	12	Tail Lever, for vertical wire connections .....	B-8142-2
	12a	Tail Lever, with Bolts (Inc. 1-12 and 2-15) .....	B-8142-2
34533	13	Washer, $\frac{3}{4}$ " Std. Plate, for lever pin .....	7826-98
	14	Bolt, $\frac{3}{8}$ "x $1\frac{3}{8}$ " Sq. Hd. and Hex. Nut, for fastening latch shoe to lever.	
	15	Bolt, $\frac{1}{2}$ "x $1\frac{1}{2}$ " Sq. Hd. and Hex. Nut, for fastening tail lever to lever.	
	16	Lag Screw, $\frac{1}{2}$ "x $2\frac{1}{2}$ " for fastening stand to table.	